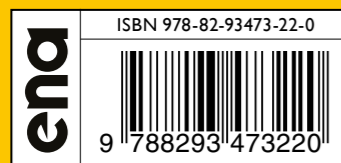
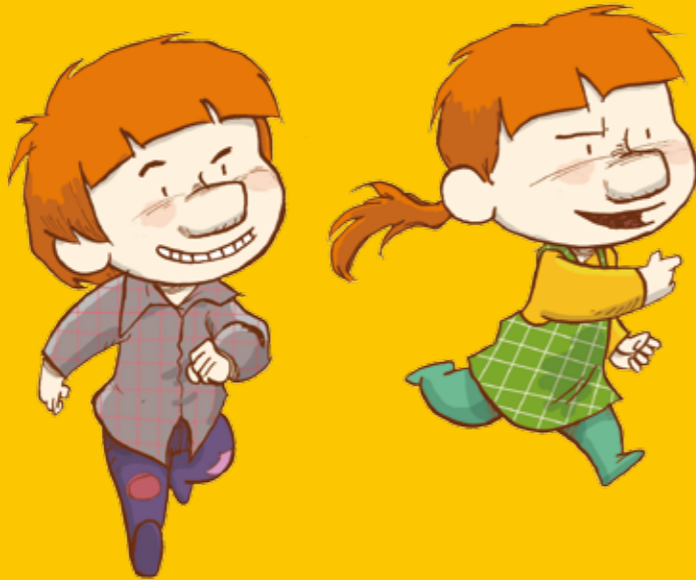


CROW'S NEST KINDERGARTEN MYSTERIES

A regular day at The Crow's Nest Kindergarten takes an unusual turn when Elin's glasses disappear. Where have they gone? Is there a thief in the kindergarten? This is a case for Leon and Livia, Crow's Nest's own detectives!



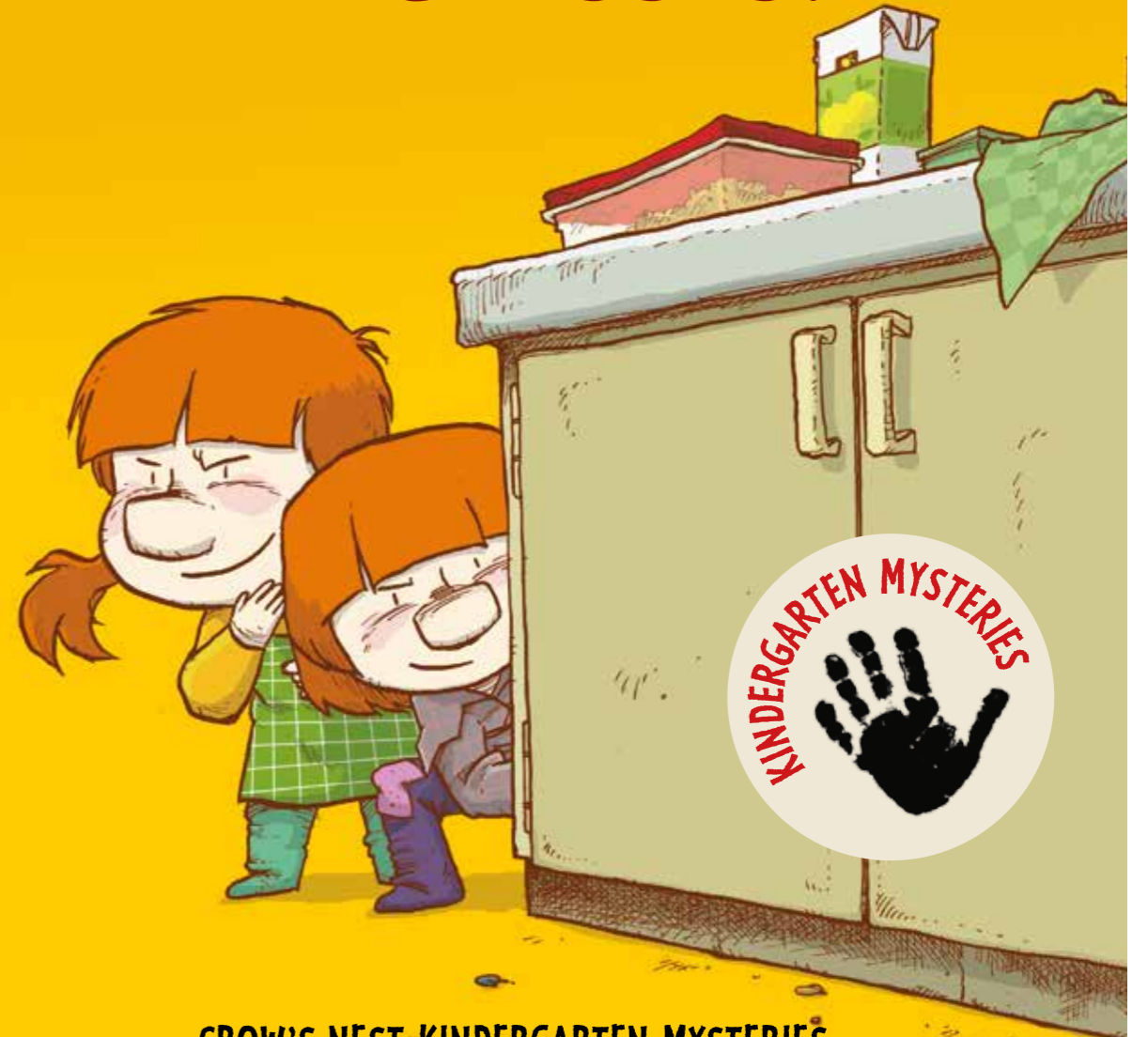
Lars Mæhle

WHO STOLE THE GLASSES?

ena

Lars Mæhle • Odd Henning Skyllingstad

WHO STOLE THE GLASSES?



CROW'S NEST KINDERGARTEN MYSTERIES

ena